

Industrial Technology Advisory/AMT Engineering/Maintenance Sub Committee Meeting

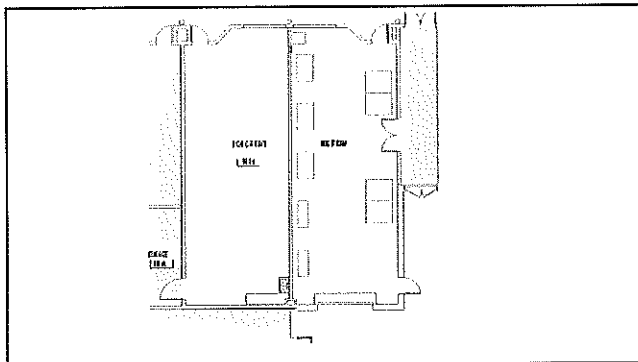
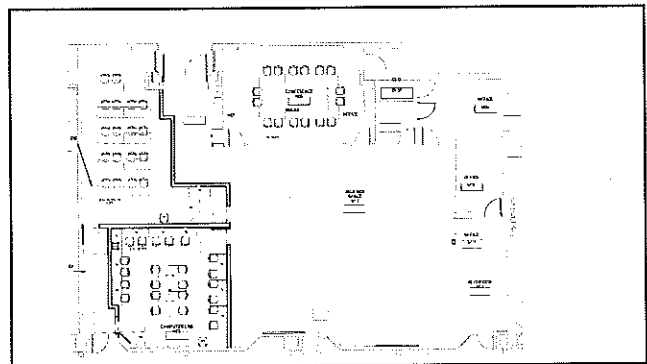
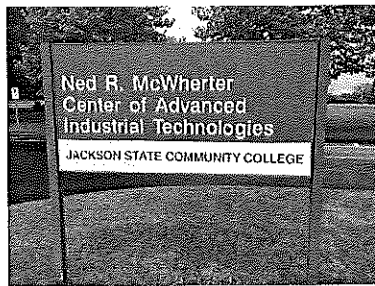
Friday, April 22, 2016
7:30 a.m.

McWherter Center for Advanced Industrial Technology

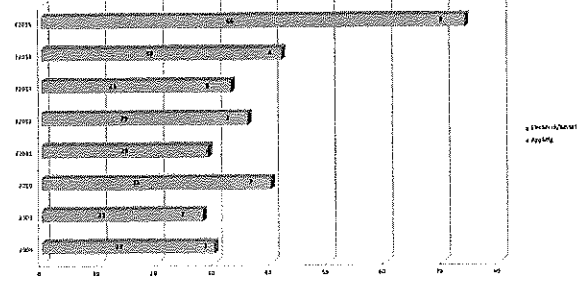
Meeting Agenda

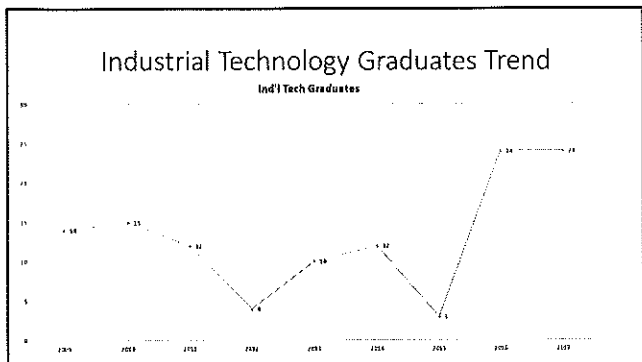
- See packet materials for details:
- Welcome – Reggie Davis, Committee Chairman, TBDN
- Old Committee Business – Jack Laser
- New Business – JSCC Staff/Faculty and Committee Input
 - Program Updates/Schedule/Recruitment
 - Curriculum Review
 - Statewide Update regarding IT and General Technology
 - JSCC faculty/staff training
 - Program funding efforts
- Facility Tour – JSCC Faculty

McWherter Center for Advanced Industrial Technologies



Industrial Technology Declared Student Trend

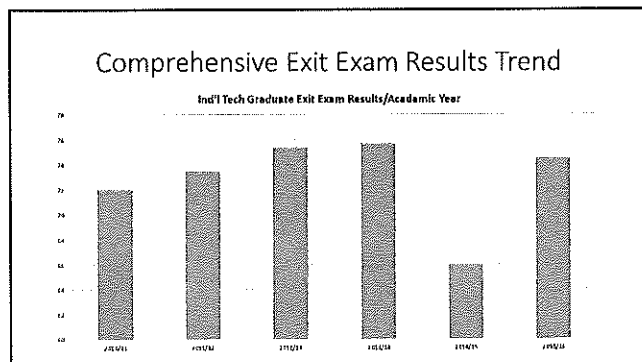




Key Facts of Ind'l Tech Class of 2016

(see table for full details)

- 26 Industrial Technology AMT co-op students began in Fall 2014
- 20 co-op students will be graduating May 7, 2016
- That's a **77% completion rate in just two years of college!!!** (National average for community college completion is 39.1% in SIX years!)*
- Of the 20 co-op students graduating:
 - 2 going on to four year university
 - 16 expected employment opportunities with co-op partners
 - 2 available for employment
- Also, 4 additional IT students were able to complete all of their remaining degree requirements due to the additional 'push' received from the co-op students and JSCC staff/faculty
- *National Student Clearinghouse Research Center, Shapiro & Dunbar, 2014



Applied Manufacturing Concentration — ~~Deletion for NOW~~

- Program and Career Description
 - This concentration prepares graduates for technical positions in industry and business in the areas between craftsman and the engineer. The primary objective is to provide a broad foundation of theoretical and practical knowledge in the areas of manufacturing processes, supervision, quality, and management opportunities. The curriculum is broad-based but focuses on the integration of each area as used in systemic applications.
- Estimated Salary Range

Career	Beginning Salary Range with AAS	Experienced Range
• Industrial Technician	\$27,530 to \$32,890	\$41,050+
• Mechanical Drafter	\$28,780 to \$34,640	\$43,920+

Jackson State Community College
Industrial Technology Course Sequence

Fall (Late August - early December)		Spring (Late January - early May)	
1. IET 110, Industrial Circuitry and Safety	3	1. IET 110, Industrial Mechanical Drafting	3
2. IET 110, DC/AC Circuits	3	2. IET 180, PLC I	3
3. IET 1010, Computation I	3	3. IET 114, Intro AutoCAD	3
3. IET 1010, Computer Applications (Word/Access)	3	3. Math 171B or 163D	3
12. Credit Hours	12	3. Econ 200, Microeconomics	3
		15. Credit Hours	15
SUMMARY OF DEGREE CONTENT:			
Summer Term (June - July)		Spring (Late January - early May)	
3. Humanities Course	3	30. IET Industrial Technology classes	30
3. Speech 1010, Fundamentals of Speech	3	22.7 General Education courses	22.7
6. Credit Hours	6	61 College Credit Hours for AAS Industrial Technology	61
Year 2:			
Fall (Late August - early December)		Spring (Late January - early May)	
3. IET 110, Electronics I	3	3. IET 200, Motors, Motors Control	3
3. IET 210, PLC II	3	3. IET 240, Fluid Power	3
3. IET 260, Instrumentation	3	3. IET 220, Robotics	3
3. Econ 200, Microeconomics	3	3. IET 207, Systematic Processes	3
15. Credit Hours	15	3. IET 281, Intern Co-op	3
		15. Credit Hours	15

(Credits may vary by Plant/Scenario or Major)

Industrial Technology Course Schedules

- **Daytime Morning and Afternoon Cohort Schedules**
 - Consist of two day per week classes in all courses -- other college divisions are highly supporting the alternate schedules required to allow the full degree requirements to be met by students coming to campus only two days/week over the five semester span
 - Allows students to work the remaining three days/week
- **Incumbent Worker Evening Cohort Schedules**
 - Designed to meet one night per week for mainly seven week, accelerated courses.
 - Ability to complete technical course requirement of program within two years
 - Many current workers just need to brush up on skillset and are taking the classes alongside the degree seeking students -- in the same class.

Jackson State Community College
Industrial Technology Department
Program Course Schedule
Fall 2016

Course	Section	Days	Time	Location	Prerequisites
EET 130	DC AC Circuits	TR	10:50 - 12:05 and 1:00 - 2:15 p.m.	100	
EET 170	Electronics I	MW	9:25 - 10:40, 10:50 - 12:05 pm, and 1 st seven week term - Tuesday 5:30 - 8:30 p.m.	100	
EET 180	PLC I	Weds	5:30 - 8:30 (per industry request)	100	
EET 230	PLC II	MW	8:00 - 9:15, 2:30 - 3:45 and all term Monday 5:30 - 8:30 p.m.	100	
EET 260	Instrumentation	MW	9:25 - 10:40, 10:50 - 12:05 and Tuesday, 2 nd seven week term, 5:30 - 8:30 p.m.	100	
IT 150	Ind'l Circuits/Safety	TR	9:25 - 10:40 (2 sections)	100	

Fall 2016 Course Schedule Options

- EET 130, DC AC Circuits, TR 10:50 – 12:05 and 1:00 – 2:15 p.m.
- EET 170, Electronics I, MW 9:25 – 10:40, 10:50 – 12:05 pm, and 1st seven week term – Tuesday 5:30 – 8:30 p.m.
- EET 180, PLC I – Weds, all term, 5:30 – 8:30 (per industry request)
- EET 230, PLC II, MW 8:00 – 9:15, 2:30 – 3:45 and all term Monday 5:30 – 8:30 p.m.
- EET 260, Instrumentation, MW 9:25 – 10:40, 10:50 -12:05 and Tuesday, 2nd seven week term, 5:30 – 8:30 p.m.
- IT 150, Ind'l Circuits/Safety, TR 9:25 – 10:40 (2 sections)
 - DO YOU HAVE EMPLOYEES THAT COULD BENEFIT FROM TAKING THESE COURSES? WHAT OTHER COURSES MIGHT YOUR FIRMS NEED?

We are looking for a few good men (and/or women)!

WE WANT YOU!

- In order to adequately staff the increased demand for IT courses, we are looking for additional adjunct, and full time, faculty to join the team.
- If you know of anyone in your facility that might be interested and meet the qualifications, please have them contact Jack Laser for more details.
- Instructors preferences:
 - Degreed engineer with at least five years of manufacturing experience (need this credential to meet ATMAE accreditation minimum instructor requirements without exceptions documentation required)
 - Or must have bachelors degree in related manufacturing field with at least ten years of relevant manufacturing experience
 - And ability to communicate effectively to a diverse population of students.

2016/17 Program Recruitment Efforts and Results

– Cathi Roberts, Completion Coordinator



Jackson State Community College
Industrial Technology Course Sequence
 Industrial Technology Department

Continuation to be reviewed at April 16th faculty meeting

Year 1:	
Fall (Late August - early December)	Spring (Late January - early May)
1. EET 130, Industrial Circuits and Safety	2. EET 150, Electro-Mechanical Devices
2. EET 170, DC/AC Circuits	3. EET 180, PLC I
3. EET 190, Computer Applications (Excel/Access)	4. MET 110, Intro Auto CAD
4. EET 230, PLC II	5. MATH 1210 or 1530
5. EET 260, Instrumentation	6. MATH 2010, Mathematics
6. IT 150, Industrial Circuits and Safety	7. EET 270, Robotics
	8. EET 297, Automatic Processes
	9. EET 291, Intern Co-op
	10. EET 292, Intern Co-op
	11. EET 293, Intern Co-op
	12. EET 294, Intern Co-op
	13. EET 295, Intern Co-op
	14. EET 296, Intern Co-op
	15. EET 297, Intern Co-op
	16. EET 298, Intern Co-op
	17. EET 299, Intern Co-op
	18. EET 300, Intern Co-op
	19. EET 301, Intern Co-op
	20. EET 302, Intern Co-op
	21. EET 303, Intern Co-op
	22. EET 304, Intern Co-op
	23. EET 305, Intern Co-op
	24. EET 306, Intern Co-op
	25. EET 307, Intern Co-op
	26. EET 308, Intern Co-op
	27. EET 309, Intern Co-op
	28. EET 310, Intern Co-op
	29. EET 311, Intern Co-op
	30. EET 312, Intern Co-op
	31. EET 313, Intern Co-op
	32. EET 314, Intern Co-op
	33. EET 315, Intern Co-op
	34. EET 316, Intern Co-op
	35. EET 317, Intern Co-op
	36. EET 318, Intern Co-op
	37. EET 319, Intern Co-op
	38. EET 320, Intern Co-op
	39. EET 321, Intern Co-op
	40. EET 322, Intern Co-op
	41. EET 323, Intern Co-op
	42. EET 324, Intern Co-op
	43. EET 325, Intern Co-op
	44. EET 326, Intern Co-op
	45. EET 327, Intern Co-op
	46. EET 328, Intern Co-op
	47. EET 329, Intern Co-op
	48. EET 330, Intern Co-op
	49. EET 331, Intern Co-op
	50. EET 332, Intern Co-op
	51. EET 333, Intern Co-op
	52. EET 334, Intern Co-op
	53. EET 335, Intern Co-op
	54. EET 336, Intern Co-op
	55. EET 337, Intern Co-op
	56. EET 338, Intern Co-op
	57. EET 339, Intern Co-op
	58. EET 340, Intern Co-op
	59. EET 341, Intern Co-op
	60. EET 342, Intern Co-op
	61. EET 343, Intern Co-op
	62. EET 344, Intern Co-op
	63. EET 345, Intern Co-op
	64. EET 346, Intern Co-op
	65. EET 347, Intern Co-op
	66. EET 348, Intern Co-op
	67. EET 349, Intern Co-op
	68. EET 350, Intern Co-op
	69. EET 351, Intern Co-op
	70. EET 352, Intern Co-op
	71. EET 353, Intern Co-op
	72. EET 354, Intern Co-op
	73. EET 355, Intern Co-op
	74. EET 356, Intern Co-op
	75. EET 357, Intern Co-op
	76. EET 358, Intern Co-op
	77. EET 359, Intern Co-op
	78. EET 360, Intern Co-op
	79. EET 361, Intern Co-op
	80. EET 362, Intern Co-op
	81. EET 363, Intern Co-op
	82. EET 364, Intern Co-op
	83. EET 365, Intern Co-op
	84. EET 366, Intern Co-op
	85. EET 367, Intern Co-op
	86. EET 368, Intern Co-op
	87. EET 369, Intern Co-op
	88. EET 370, Intern Co-op
	89. EET 371, Intern Co-op
	90. EET 372, Intern Co-op
	91. EET 373, Intern Co-op
	92. EET 374, Intern Co-op
	93. EET 375, Intern Co-op
	94. EET 376, Intern Co-op
	95. EET 377, Intern Co-op
	96. EET 378, Intern Co-op
	97. EET 379, Intern Co-op
	98. EET 380, Intern Co-op
	99. EET 381, Intern Co-op
	100. EET 382, Intern Co-op
	101. EET 383, Intern Co-op
	102. EET 384, Intern Co-op
	103. EET 385, Intern Co-op
	104. EET 386, Intern Co-op
	105. EET 387, Intern Co-op
	106. EET 388, Intern Co-op
	107. EET 389, Intern Co-op
	108. EET 390, Intern Co-op
	109. EET 391, Intern Co-op
	110. EET 392, Intern Co-op
	111. EET 393, Intern Co-op
	112. EET 394, Intern Co-op
	113. EET 395, Intern Co-op
	114. EET 396, Intern Co-op
	115. EET 397, Intern Co-op
	116. EET 398, Intern Co-op
	117. EET 399, Intern Co-op
	118. EET 400, Intern Co-op
	119. EET 401, Intern Co-op
	120. EET 402, Intern Co-op
	121. EET 403, Intern Co-op
	122. EET 404, Intern Co-op
	123. EET 405, Intern Co-op
	124. EET 406, Intern Co-op
	125. EET 407, Intern Co-op
	126. EET 408, Intern Co-op
	127. EET 409, Intern Co-op
	128. EET 410, Intern Co-op
	129. EET 411, Intern Co-op
	130. EET 412, Intern Co-op
	131. EET 413, Intern Co-op
	132. EET 414, Intern Co-op
	133. EET 415, Intern Co-op
	134. EET 416, Intern Co-op
	135. EET 417, Intern Co-op
	136. EET 418, Intern Co-op
	137. EET 419, Intern Co-op
	138. EET 420, Intern Co-op
	139. EET 421, Intern Co-op
	140. EET 422, Intern Co-op
	141. EET 423, Intern Co-op
	142. EET 424, Intern Co-op
	143. EET 425, Intern Co-op
	144. EET 426, Intern Co-op
	145. EET 427, Intern Co-op
	146. EET 428, Intern Co-op
	147. EET 429, Intern Co-op
	148. EET 430, Intern Co-op
	149. EET 431, Intern Co-op
	150. EET 432, Intern Co-op
	151. EET 433, Intern Co-op
	152. EET 434, Intern Co-op
	153. EET 435, Intern Co-op
	154. EET 436, Intern Co-op
	155. EET 437, Intern Co-op
	156. EET 438, Intern Co-op
	157. EET 439, Intern Co-op
	158. EET 440, Intern Co-op
	159. EET 441, Intern Co-op
	160. EET 442, Intern Co-op
	161. EET 443, Intern Co-op
	162. EET 444, Intern Co-op
	163. EET 445, Intern Co-op
	164. EET 446, Intern Co-op
	165. EET 447, Intern Co-op
	166. EET 448, Intern Co-op
	167. EET 449, Intern Co-op
	168. EET 450, Intern Co-op
	169. EET 451, Intern Co-op
	170. EET 452, Intern Co-op
	171. EET 453, Intern Co-op
	172. EET 454, Intern Co-op
	173. EET 455, Intern Co-op
	174. EET 456, Intern Co-op
	175. EET 457, Intern Co-op
	176. EET 458, Intern Co-op
	177. EET 459, Intern Co-op
	178. EET 460, Intern Co-op
	179. EET 461, Intern Co-op
	180. EET 462, Intern Co-op
	181. EET 463, Intern Co-op
	182. EET 464, Intern Co-op
	183. EET 465, Intern Co-op
	184. EET 466, Intern Co-op
	185. EET 467, Intern Co-op
	186. EET 468, Intern Co-op
	187. EET 469, Intern Co-op
	188. EET 470, Intern Co-op
	189. EET 471, Intern Co-op
	190. EET 472, Intern Co-op
	191. EET 473, Intern Co-op
	192. EET 474, Intern Co-op
	193. EET 475, Intern Co-op
	194. EET 476, Intern Co-op
	195. EET 477, Intern Co-op
	196. EET 478, Intern Co-op
	197. EET 479, Intern Co-op
	198. EET 480, Intern Co-op
	199. EET 481, Intern Co-op
	200. EET 482, Intern Co-op
	201. EET 483, Intern Co-op
	202. EET 484, Intern Co-op
	203. EET 485, Intern Co-op
	204. EET 486, Intern Co-op
	205. EET 487, Intern Co-op
	206. EET 488, Intern Co-op
	207. EET 489, Intern Co-op
	208. EET 490, Intern Co-op
	209. EET 491, Intern Co-op
	210. EET 492, Intern Co-op
	211. EET 493, Intern Co-op
	212. EET 494, Intern Co-op
	213. EET 495, Intern Co-op
	214. EET 496, Intern Co-op
	215. EET 497, Intern Co-op
	216. EET 498, Intern Co-op
	217. EET 499, Intern Co-op
	218. EET 500, Intern Co-op
	219. EET 501, Intern Co-op
	220. EET 502, Intern Co-op
	221. EET 503, Intern Co-op
	222. EET 504, Intern Co-op
	223. EET 505, Intern Co-op
	224. EET 506, Intern Co-op
	225. EET 507, Intern Co-op
	226. EET 508, Intern Co-op
	227. EET 509, Intern Co-op
	228. EET 510, Intern Co-op
	229. EET 511, Intern Co-op
	230. EET 512, Intern Co-op
	231. EET 513, Intern Co-op
	232. EET 514, Intern Co-op
	233. EET 515, Intern Co-op
	234. EET 516, Intern Co-op
	235. EET 517, Intern Co-op
	236. EET 518, Intern Co-op
	237. EET 519, Intern Co-op
	238. EET 520, Intern Co-op
	239. EET 521, Intern Co-op
	240. EET 522, Intern Co-op
	241. EET 523, Intern Co-op
	242. EET 524, Intern Co-op
	243. EET 525, Intern Co-op
	244. EET 526, Intern Co-op
	245. EET 527, Intern Co-op
	246. EET 528, Intern Co-op
	247. EET 529, Intern Co-op
	248. EET 530, Intern Co-op
	249. EET 531, Intern Co-op
	250. EET 532, Intern Co-op
	251. EET 533, Intern Co-op
	252. EET 534, Intern Co-op
	253. EET 535, Intern Co-op
	254. EET 536, Intern Co-op
	255. EET 537, Intern Co-op
	256. EET 538, Intern Co-op
	257. EET 539, Intern Co-op
	258. EET 540, Intern Co-op
	259. EET 541, Intern Co-op
	260. EET 542, Intern Co-op
	261. EET 543, Intern Co-op
	262. EET 544, Intern Co-op
	263. EET 545, Intern Co-op
	264. EET 546, Intern Co-op
	265. EET 547, Intern Co-op
	266. EET 548, Intern Co-op
	267. EET 549, Intern Co-op
	268. EET 550, Intern Co-op
	269. EET 551, Intern Co-op
	270. EET 552, Intern Co-op
	271. EET 553, Intern Co-op
	272. EET 554, Intern Co-op
	273. EET 555, Intern Co-op
	274. EET 556, Intern Co-op
	275. EET 557, Intern Co-op
	276. EET 558, Intern Co-op
	277. EET 559, Intern Co-op
	278. EET 560, Intern Co-op
	279. EET 561, Intern Co-op
	280. EET 562, Intern Co-op
	281. EET 563, Intern Co-op
	282. EET 564, Intern Co-op
	283. EET 565, Intern Co-op
	284. EET 566, Intern Co-op
	285. EET 567, Intern Co-op
	286. EET 568, Intern Co-op
	287. EET 569, Intern Co-op
	288. EET 570, Intern Co-op
	289. EET 571, Intern Co-op
	290. EET 572, Intern Co-op
	291. EET 573, Intern Co-op
	292. EET 574, Intern Co-op
	293. EET 575, Intern Co-op
	294. EET 576, Intern Co-op
	295. EET 577, Intern Co-op
	296. EET 578, Intern Co-op
	297. EET 579, Intern Co-op
	298. EET 580, Intern Co-op
	299. EET 581, Intern Co-op
	300. EET 582, Intern Co-op
	301. EET 583, Intern Co-op
	302. EET 584, Intern Co-op
	303. EET 585, Intern Co-op
	304. EET 586, Intern Co-op
	305. EET 587, Intern Co-op
	306. EET 588, Intern Co-op
	307. EET 589, Intern Co-op
	308. EET 590, Intern Co-op
	309. EET 591, Intern Co-op
	310. EET 592, Intern Co-op
	311. EET 593, Intern Co-op
	312. EET 594, Intern Co-op
	313. EET 595, Intern Co-op
	314. EET 596, Intern Co-op
	315. EET 597, Intern Co-op
	316. EET 598, Intern Co-op
	317. EET 599, Intern Co-op
	318. EET 600, Intern Co-op
	319. EET 601, Intern Co-op
	320. EET 602, Intern Co-op
	321. EET 603, Intern Co-op
	322. EET 604, Intern Co-op
	323. EET 605, Intern Co-op
	324. EET 606, Intern Co-op
	325. EET 607, Intern Co-op
	326. EET 608, Intern Co-op
	327. EET 609, Intern Co-op
	328. EET 610, Intern Co-op
	329. EET 611, Intern Co-op
	330. EET 612, Intern Co-op
	331. EET 613, Intern Co-op
	332. EET 614, Intern Co-op
	333. EET 615, Intern Co-op
	334. EET 616, Intern Co-op
	335. EET 617, Intern Co-op
	336. EET 618, Intern Co-op
	337. EET 619, Intern Co-op
	338. EET 620, Intern Co

EET 150 – Electromechanical Devices (see validation sheet)

EET 150 – Electromechanical Devices (Second Semester Course)

This course is a survey of the major topics used in the design and electrical and mechanical devices used in industrial settings. Electrical topics include motor, generator, transformers, PLC, DC power supplies, and circuit components. Mechanical topics include machine design (gears, belts, shafts, bearings, clutches, alignment, vibration insights etc.) Solutions to design process problems using applied engineering mechanic and strength of materials are also addressed.

EET 150 Learning Objectives	
a.	To demonstrate the different types of mechanical systems used in industrial settings.
b.	To demonstrate a comprehensive knowledge of electromechanical devices used in industrial settings.
c.	To identify the different mechanical devices used in industrial equipment/industry.
d.	To apply the principles of physics to industrial and mechanical problems.

Additional outcomes expected with curriculum updates starting Fall 2016:

Using supplemental mechanical trainer online simulations, students will be able to actively participate in virtual industrial activities deepening their application of the course principles.

EET 180, PLC I – see validation sheet

EET 180 – Programmable Logic Controls I (Second Semester Course)

An introduction to programmable logic controllers and their usage in modern industry is covered. Memory addressing schemes and ladder logic are discussed in detail. PLC installation and maintenance are also discussed.

EET 180 Learning Objectives	
a.	To impart an understanding and overview of programmable logic controllers.
b.	To familiarize the student with various PLC hardware components and system arrangements.
c.	To familiarize the student with PLC number systems and fundamentals of control logic.
d.	To provide an understanding in basic PLC wiring diagrams and ladder logic programs using industry standards.
e.	The proper use of timers and counters in a variety of PLC ladder logic program applications.
f.	Provide student with various programming examples, opportunities, and skill development.

Additional outcomes expected with curriculum updates starting Fall 2016:

Course has updated hands on lab activities to aid with student's ability to apply concepts to real world situations.

EET 170 – Electronics I

EET 170 – Electronics I (Third Semester Course)

This course covers basic semiconductor theory. Theory and applications of diodes and transistors are discussed in detail. The operation of rectifiers, filters, and amplifiers is also covered. Circuit analysis and troubleshooting techniques are developed in the laboratory. Use of Multisim V12 shall be required for the course.

EET 170 Learning Objectives	
a.	Identify the solid state components.
b.	Describe the component level reactions in a solid state circuit.
c.	Apply component knowledge to construct a solid state circuit.
d.	Troubleshoot unexpected component reaction in a solid state circuit.
e.	Solve for expected results in a solid state circuit.

Additional outcomes expected with curriculum updates starting Fall 2016:

Course will incorporate more digital electronics using Siemens techniques.

EET 200 – Motors and Motor Controls

EET 200 – Motors and Motor Controls

This course covers the principles of converting electrical power into mechanical work and mechanical power into electrical power. The basic electromagnetic principles of motors, and motor controls are studied. Motor work, efficiency, torque, and speed shall be address in the lab.

EET 200 Learning Objectives	
a.	To impart an understanding of electrical motor theory.
b.	To discuss various means of starting, stopping and controlling motors.
c.	To provide hands-on experience in operating and analyzing motor control circuits.
d.	To develop techniques for troubleshooting motor control circuits.

Additional outcomes expected with curriculum updates starting Fall 2016:

Course has updated hands on motion control trainers to aid with student's ability to apply concepts to real world situations.

EET 230 – PLC II

EET 230 – Programmable Logic Controls II (Third Semester Course)

A continuation of EET 180, PLC I. Advanced instruction set and hardware are discussed in depth. Analog I/O, encoders, PID controls, transducers, and internal file structures and usage are the main topics of interest.

EET 230 Learning Objectives	
a.	The study and usage of the advanced PLC instruction set.
b.	To develop techniques for handling analog inputs and outputs.
c.	To familiarize the student with PLC solutions to process problems in industry.
d.	To familiarize the students with the role of PLC's in networks.
e.	To provide hands-on experience in intermediate and advanced programming techniques.
f.	

Additional outcomes expected with curriculum updates starting Fall 2016:

Course has updated hands on lab activities to aid with student's ability to apply concepts to real world situations.

EET 260 - Instrumentation

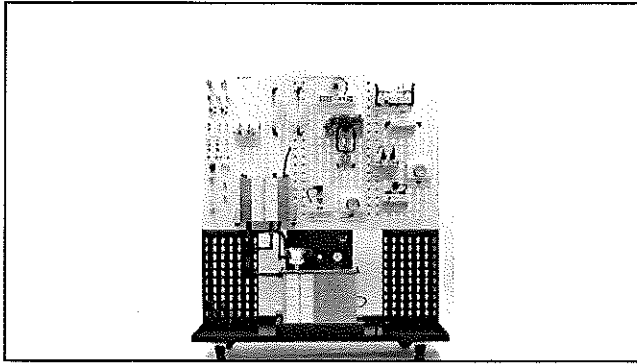
EET 260 – Instrumentation (Third Semester Course)

Instrumentation is used to measure and control manufacturing processes and the physical properties of materials. This course covers the principles, applications, and understanding on how instrumentation accomplishes this task from an industrial perspective. We also cover how modern instrumentation measure, controls, and interacts with computer, electrical, hydraulic, and mechanical systems. Some focus is given to troubleshooting techniques used to troubleshoot instrumentation devices such as thermocouples, load cells, pressure transducers, and flow measuring devices.

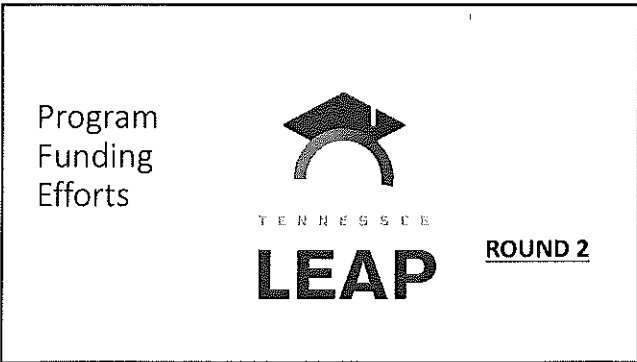
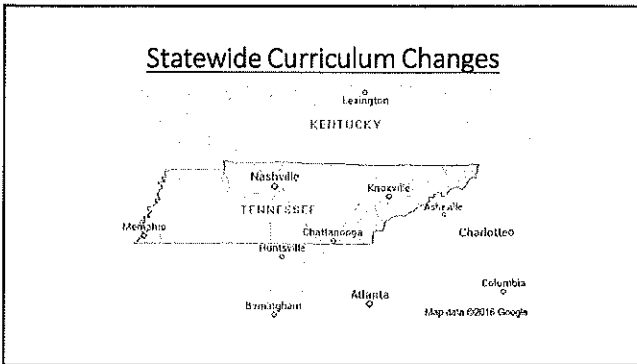
EET 260 Learning Objectives	
a.	Define process instrumentation and identify present-day trends in the instrumentation field.
b.	Identify common industry standards and organizations that regulate these standards.
c.	Describe the control elements of a process control system and explain their function.
d.	Identify operation mechanical and electrical pressure instruments and their calibration.
e.	Define the different types of signal transmission and communication methodologies.
f.	Discuss automatic control and identify common terms associated with it.
g.	Describe the purpose of controller tuning, tuning coefficients, and performance parameters.

Additional outcomes expected with curriculum updates starting Fall 2016:

See power point for more detail of additional training equipment and the attributes it would have to the course.



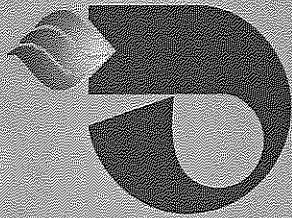
- **FEATURES**
 - Totally self contained with all power supplies and fluid sources
 - Industrial control devices and sensors PC programmable devices
 - Modular and versatile
 - Allows calibration and testing of process transmitters
 - 4-20mA current loops
 - Mobile wheeled trolley
 - Fully developed curriculum
 - PID controller
- **SUBJECT AREA:**
 - Familiarization
 - 4-20mA Current Loops
 - 4-20mA Programmable Display
 - Capacitive Level Sensor and Transmitter
 - Temperature Sensors and Transmitter
 - Flow Meter and Pulse Flow Sensor
 - Introduction to Control Valves
 - Pressure Devices
 - Current to Pressure (I-P) Converter
 - The Orifice Block
 - Universal Transmitter
 - Process Controller



Fall 2016 Course Schedule Options

- **EET 130, DC AC Circuits**, TR 10:50 – 12:05 and 1:00 – 2:15 p.m.
- **EET 170, Electronics I**, MW 9:25 – 10:40, 10:50 – 12:05 pm. and 1st seven week term – Tuesday 5:30 – 8:30 p.m.
- **EET 180, PLC I – Weds**, all term, 5:30 – 8:30 (per industry request)
- **EET 230, PLC II**, MW 8:00 – 9:15, 2:30 – 3:45 and all term Monday 5:30 – 8:30 p.m.
- **EET 260, Instrumentation**, MW 9:25 – 10:40, 10:50 -12:05 and Tuesday, 2nd seven week term, 5:30 – 8:30 p.m.
- **IT 150, Ind'l Circuits/Safety**, TR 9:25 – 10:40 (2 sections)
 - **DO YOU HAVE EMPLOYEES THAT COULD BENEFIT FROM TAKING THESE COURSES? WHAT OTHER COURSES MIGHT YOUR FIRMS NEED?**

JSCC AMT Consortium



 **General Cable**

TOYOTA
BODINE

 **DELTA**
FAUCET COMPANY

AIRJ

 **GERDAU**

Metal Technologies
Jackson Die Casting

lyondellbasell

PICISWEET

 **US FARATHANE**
CORPORATION

TBDN TENNESSEE COMPANY

Pinnacle
FOODS INC.

CARLISLE

ZURO
BAG MFG. CO.

StanleyBlack&Decker

 **Amstrong**
HARDWOOD FLOORING